

* How to use AL9010

1. Press the power button.
2. Warming up until you can see “blow” sign.
3. Blowing through the mouthpiece into the unit for 4 seconds.
4. The result is displayed for 15 seconds.
If you want to test again, press the power button after turning off the back light.
5. Unit automatically turns off after 4 minutes.

* Warning Display

1. Flow : If you see “Flow” in the display, the breath sample was not strong enough for measurement. Please power on the unit again and make sure the breath is strong and steady during sampling.
2. bat : If you see “bat” in the display, the battery power is low.
Please replace the batteries.
3. CAL : If you see “CAL” in the display, the unit requires recalibration or maintenance.
Please contact a supplier.

* Printer

► Printer connecting mode

→ When connecting with a printer, you can check the test result like below;



► Printing Data



1. Keep pressing the power button 5 seconds connecting with a printer.
Then LCD displays like a picture



2. Press the power button one more,
LCD shows a "P100". After 5 seconds, 100 latest test result will be printed.
AL9010 will power off after printing.



3. Press the power button one more,
LCD shows a "P200". After 5 seconds, 200 latest test result will be printed.
AL9010 will power off after printing.



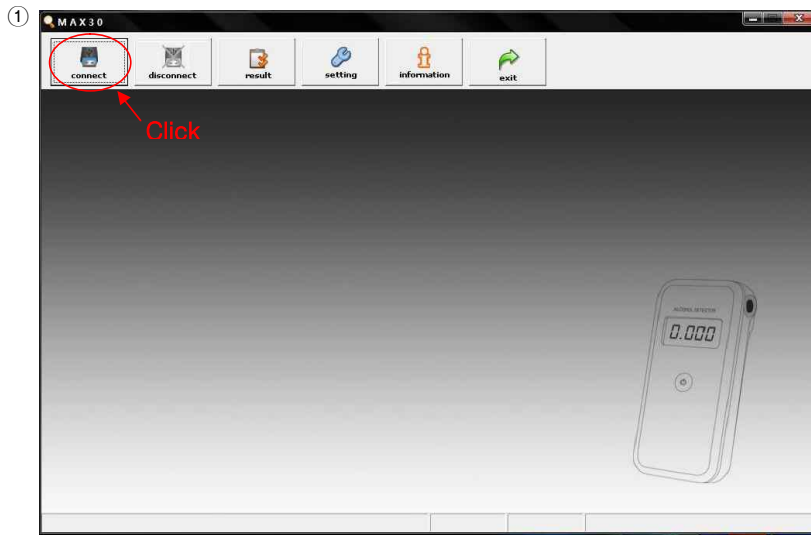
4. Press the power button one more,
LCD shows a "PALL". After 5 seconds, all test result will be printed.
AL9010 will power off after printing.

-> Printing result

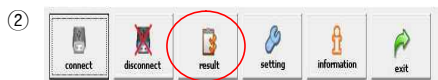
| <Test Results Report> | | | |
|---------------------------------|-------------|----------|-------|
| ===== | | | |
| Device Information | | | |
| Product:AL9010 | | | |
| Serial Number: | | | |
| Software Version:9010 Rev:1.00 | | | |
| Last Calibration:01-Jun-2011 | | | |
| Print Date:02-Jun-2011,16:28:40 | | | |
| ===== | | | |
| No | DATE | TIME | %BAC |
| ----- | | | |
| 001 | 01-Jan-2000 | 00:00:16 | 0.000 |
| 002 | 01-Jan-2000 | 00:03:42 | 0.000 |
| 003 | 01-Jan-2000 | 02:31:00 | 0.099 |
| 004 | 01-Jan-2000 | 04:41:38 | 0.000 |
| 005 | 31-May-2011 | 20:22:51 | OUT |
| 006 | 31-May-2011 | 20:24:36 | OUT |
| 007 | 31-May-2011 | 20:42:47 | 0.099 |
| 008 | 31-May-2011 | 20:43:49 | 0.103 |
| 009 | 31-May-2011 | 20:45:39 | 0.100 |

* MAX 30

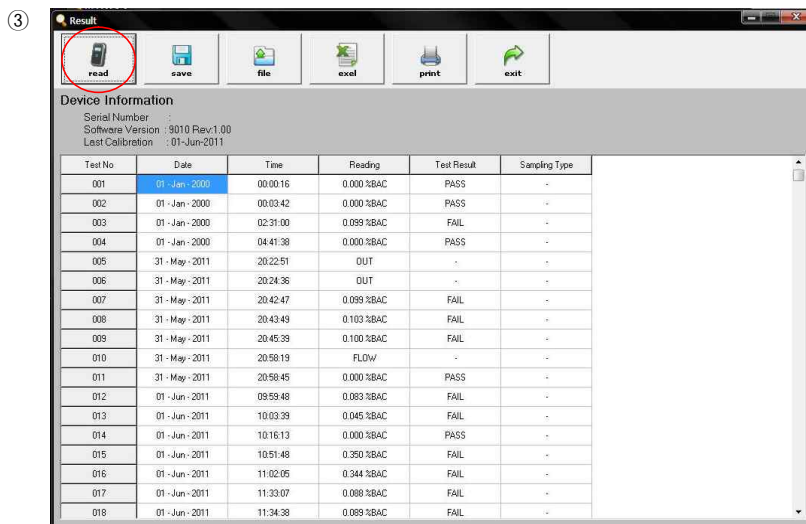
→ AL9010 LCD display "Usb" when AL9010 connecting with a PC.
Then MAX 30 will start.



→ Click "connect " icon on MAX30 to connect AL9010 and PC.



→ When AL9010 connected with PC, " connect " icon will be activated and " disconnect " icon will be deactivated.
You can check out test data by clicking " result " icon.



→ Click " read " icon, test result will be loaded from AL9010 to MAX30.